

How to Place a Stroke Around and Image on Photoshop

by Bob Kenedi

How to Place a Stroke Around an Image in Photoshop by Bob Kenedi

Stroking in photoshop is placing a line around a selected area. A frequent application of stroking is placing a super simple frame around a photo for the purpose of delineating the image from its surroundings. As one way or another our photographs are bound to be viewed and even judged via the internet where you may not have a control of its immediate surroundings, it is advisable to learn placing the stroke on [our images](#).

This kind of simple delineation appears to be allowed in most competitions even those which do not allow any other type of framing.

The steps once your photo is in Photoshop are:

1- Create a new layer on top of the layer stack, and name it. (This can be either a new empty layer, or a complete composite of your end result, but to avoid confusion, it is not advisable to do any other editing function on that layer.)

2- Chose **Select All** - Shortcut: Command A (Mac) Control A (Windows)
This will create a selection around the image.

3- Chose **Edit > Stroke** which will open a window in which you can specify your stroke:

- Decide the thickness of the stroking line. Thin lines, between 1 - 5 pixels are recommended for most image sizes.

- Decide the color of the stroking line. Generally black or white is recommended or a significant color picked up from the image.

- The stroke can be placed outside, inside or it can be centered on the outside edge of the image.

3a- There may be reasons for the window not to become available. There is an excellent Comprehensive message that will appear in that case. It lists all the reasons that may be the cause, and gives all necessary instructions how to fix it.

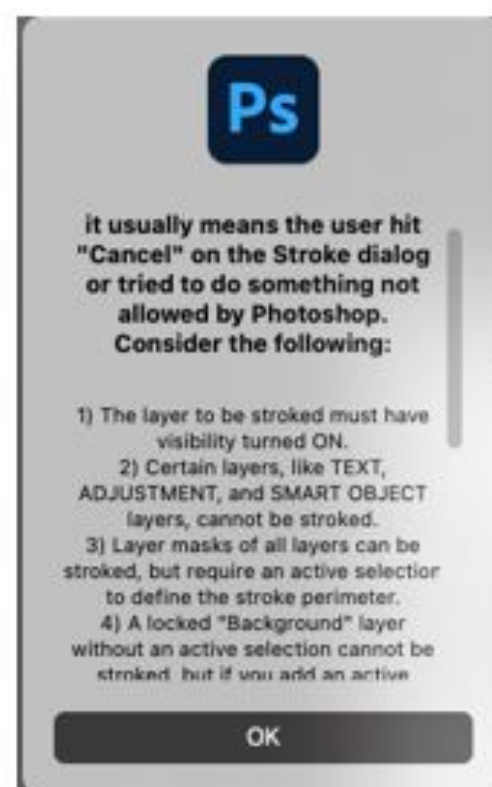
4- Press OK in the window.

5- Delete the selection — Shortcut: Command D (Mac) Control D (Windows)
and the stroke is now completed.

That's it.

If you have not used PS before

and you are taking the picture to PS the first time for stroking, let it become stroking **not the only reason** to take your pictures to Photoshop on a round trip. Learn to do other adjustment techniques in PS, one by one. But you



also need to know a few more steps, how to open and save your adjustments, and then place your adjusted image file either back where it was or wherever you desire it to be.

Since we like to know how to get out *before* we go in anywhere, I start with Step 6, the alternatives for finishing and saving. As, like with generally in photoshop, there are many ways to do almost everything, this as well. So, here are two simple ways, followed by 3 other alternatives.

6a - Choose Save under **File** in the menu bar and you are done. You will find your stroke less image replaced with your now stroked version, wherever it was in your filing system when you started.

6b - For more control, choose **Save As...** under **File** in the menu bar. Now you can give the stroked file a changed name or an entirely new name, and also a new place and a new file format if you so wish. But if you opt not change any, it will do exactly what Save does, however it will also give you a reminder that you are **replacing** the file which you started with, which is also a reminder where your starting file is, hence your altered file will be. For that reason I much prefer this alternative over 6a.

Opening an image file in Photoshop can be done many ways.

Lastly, now that we know how to get it done, there is no reason to hesitate to start doing it. Out of the many alternatives for taking a photo into Photoshop here are the main ones:

O1 - Launch Photoshop, and use the Open

O2 - Double-clicking may work, but it may cause the photo to open in an other application.

To change that:

Right-click on photo : Get Info > Open with... That will offer all avail able apps that can open the photo. **Choose:**
Adobe Photoshop*.

O3 - Use the Bridge app, which is part of the PS download. Bridge recognizes all our photos exactly as they are organized in the Finder. Find and select the image file(s) to open. The shortcut Command-O will open image file(s).

O4 - Have the PS icon in the Dock, and drag the file onto the PS icon there. (Mac only).

Opening from Lightroom is not considered as Lightroom has it's own feature to create stroke.

